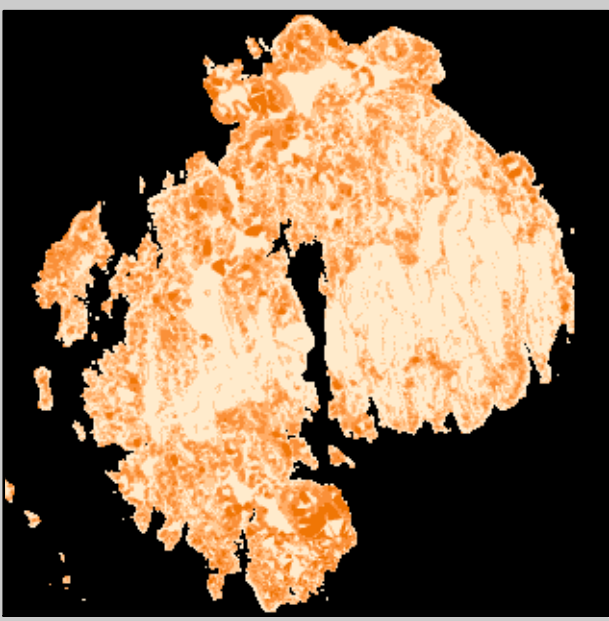


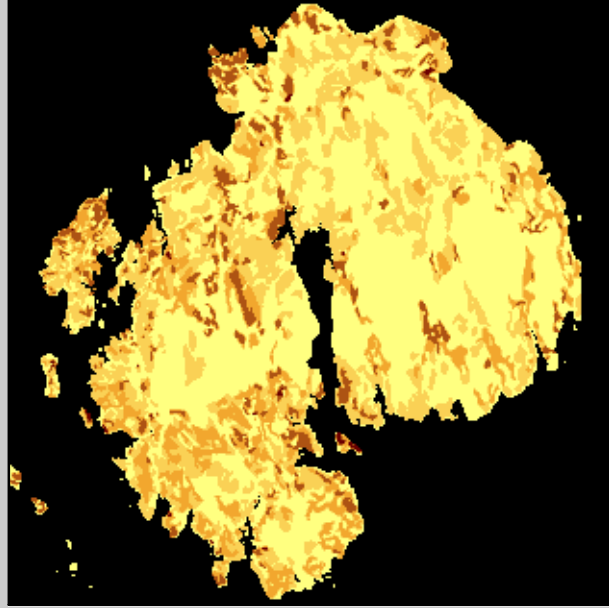
# Suitability Analysis for Development and Conservation Priorities

*Mount Desert Island*

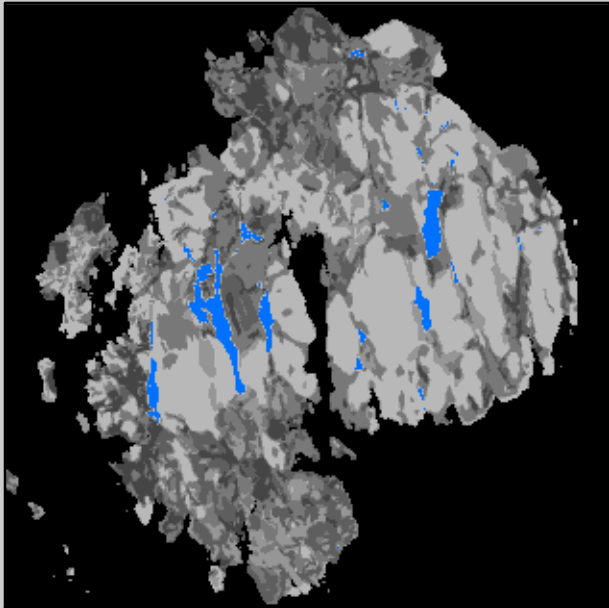
Slope



Soils



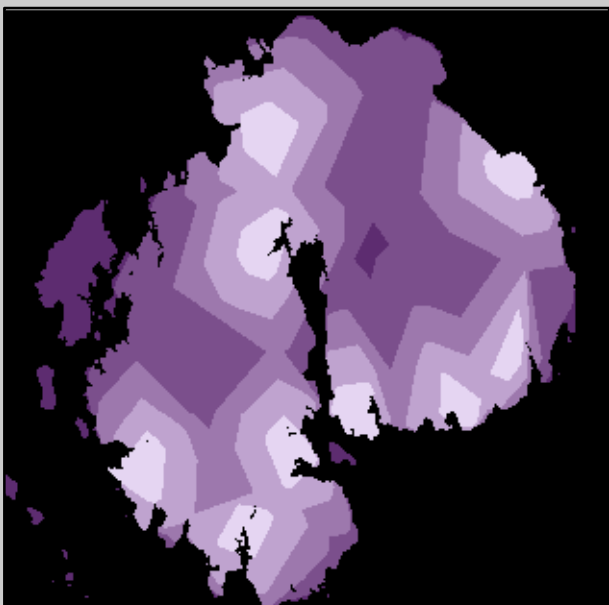
Permeability



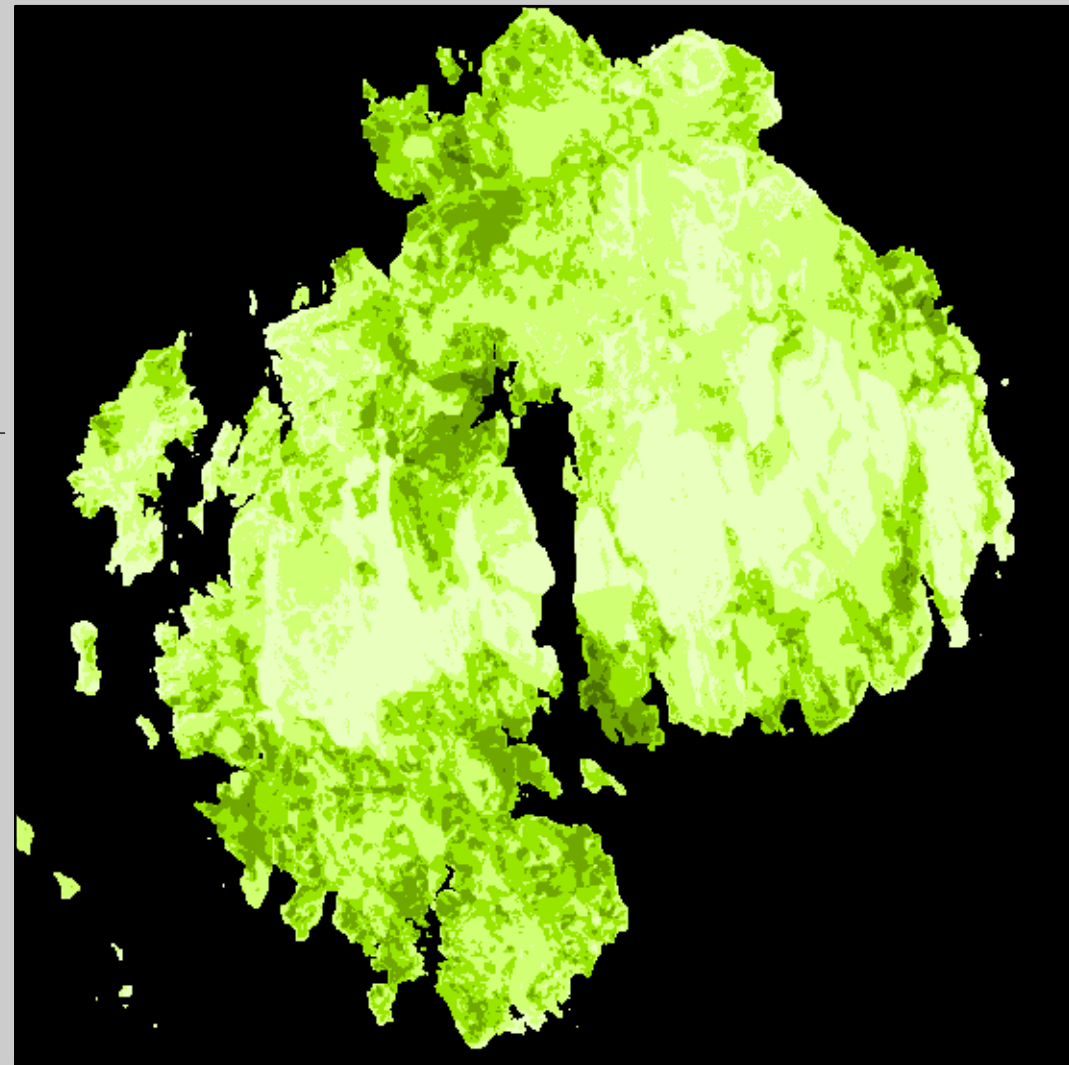
Sewer System



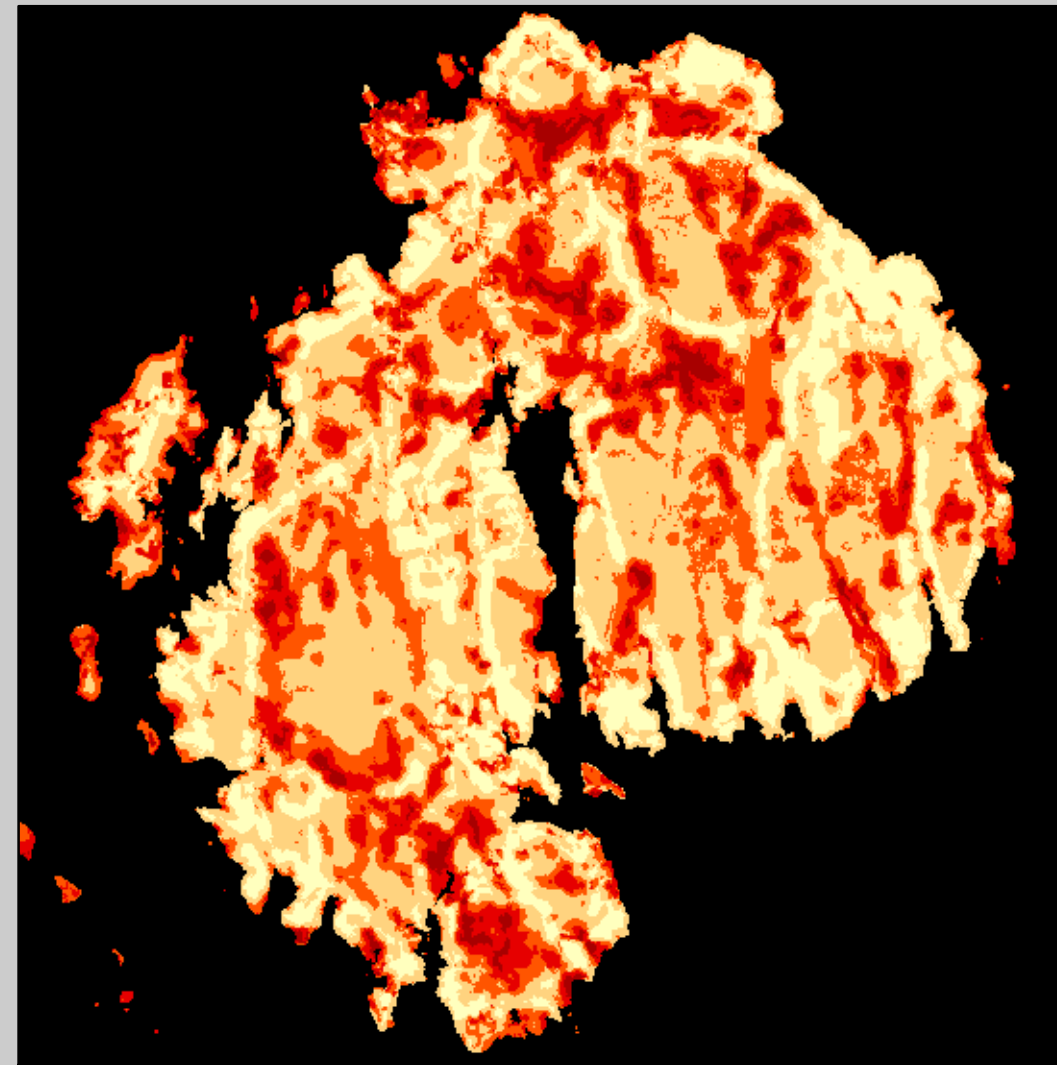
Cost of Sprawl



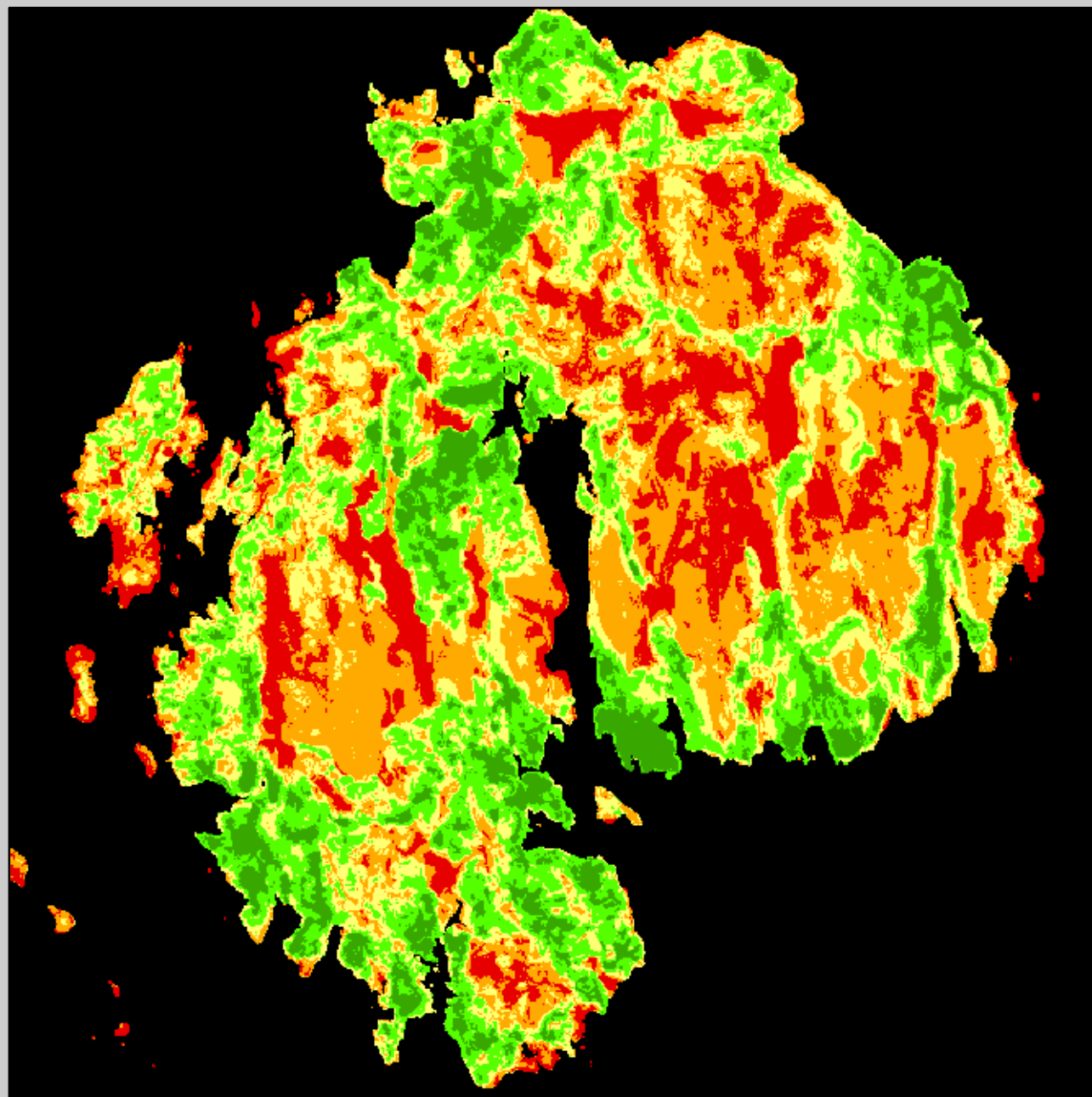
## Development Suitability



## Conservation Priorities



## Final Synthesis



### Legend

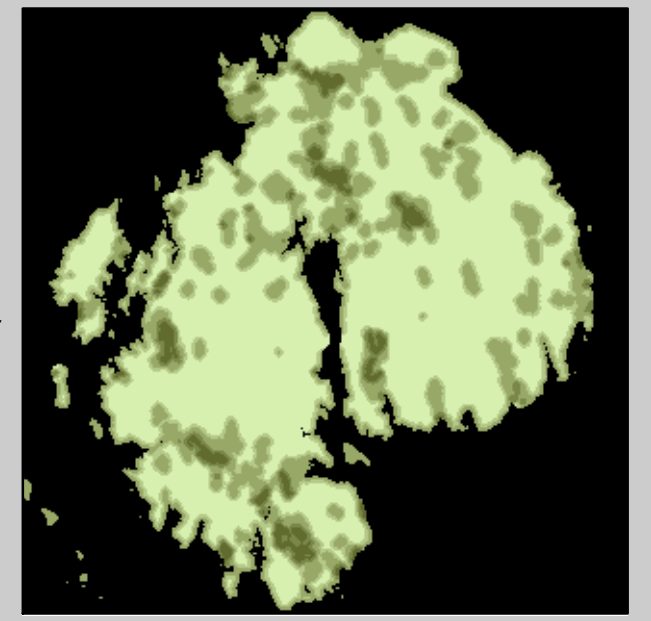
#### Final Synthesis

- Very High Conservation Priority
- High Conservation Priority
- Marginal Land
- High Development Suitability
- Very High Development Suitability

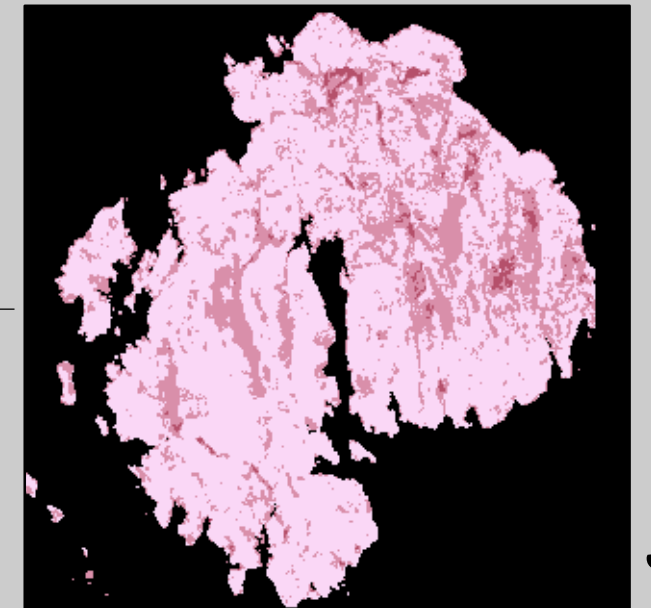
ArcGIS 8.1 Spatial Analyst extension was employed to demonstrate use of Suitability Modeling in ecological planning. Ten different analysis considering various land characteristics of Mount Desert Island were performed. The analysis process culminated with their synthesis into three models which identify places either suitable for development, or places with high conservation priorities at a macro scale.

Prepared by Tomas Vaclavik  
College of the Atlantic &  
Palacky University  
March 2004

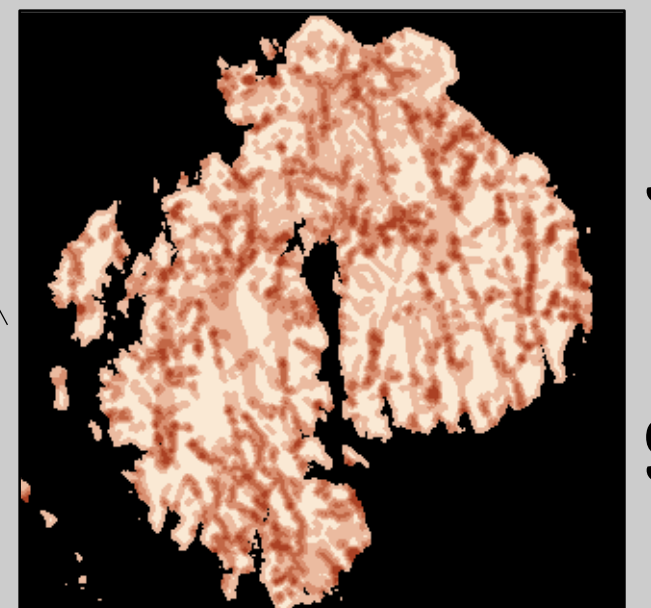
Wildlife Habitat



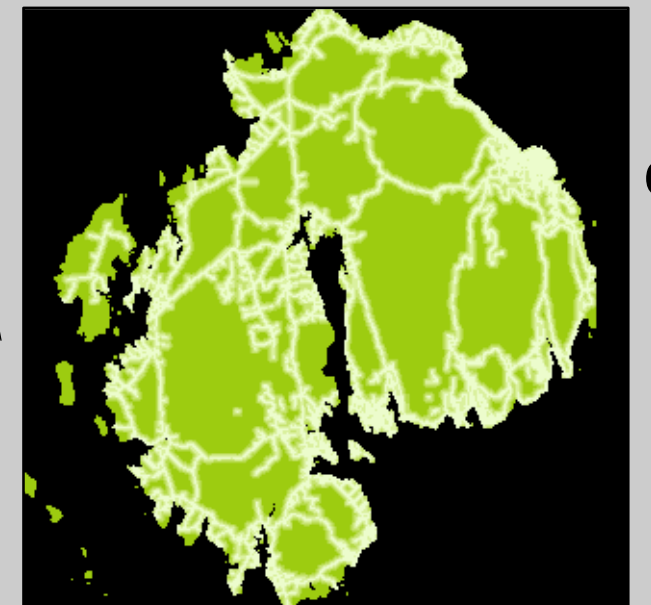
Hab. Suitability



Hydrology



Fragmentation



Prime Agri. Soils

